

# DSH Heater

## Outdoor Heat

### Infrared Heating

Provides premium comfort by reaching maximum heat in less than 3 seconds

### Ease of Operation

Programmable timer with remote control, features safety shutoff after 8 hours of continuous operation

### Outdoor Rated

Water/dust tight IP65 rating for outdoor applications



**Product Dimensions (WxHxD)**  
 23-1/2" x 6" x 12-7/8"  
 59.6 cm x 15.4 cm x 32.6 cm

Model	Watts	Volts	BTU	Weight (lbs./kg)
DSH20W	2000	240	1710	11.7 / 5.3

### Accessories (sold separately)



**DSHCMB**  
 Ceiling-mount  
 Bracket

**DSHSTAND**  
 Floor Stand

**Nextrema® Schott**

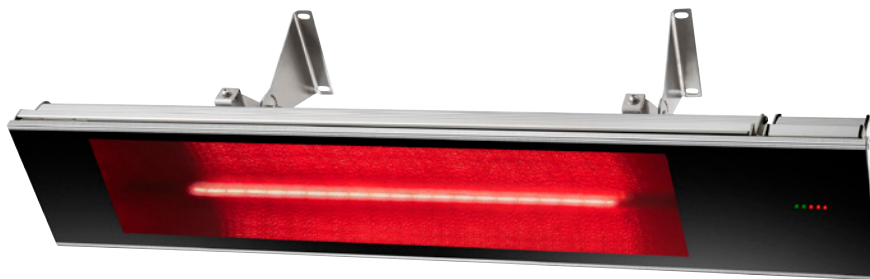
Nextrema Schott glass ensures even heat distribution and minimizes light emissions.

**Ease of Operation**

Programmable timer with remote control, features safety shutoff after 8 hours of continuous operation.

**Outdoor Rated**

Water/dust tight IP65 rating for outdoor applications.



Model	Watts	Volts	Length (in/cm)	Weight (lbs./kg)
DIR15A10GR	1500	120	35-1/2 / 90.1	13.4 / 6.1
DIR18A10GR	1800	240	35-1/2 / 90.1	13.4 / 6.1
DIR22A10GR	2200	240	35-1/2 / 90.1	13.4 / 6.1

Height x Depth  
6-3/4" x 3"  
17.1 cm x 7.6 cm



Model	Watts	Volts	Length (in/cm)	Weight (lbs./kg)
DIR30A10GR	3000	240	50-5/8 / 128.6	18.4 / 8.4

Height x Depth  
6-3/4" x 5"  
17.1 cm x 12.8 cm